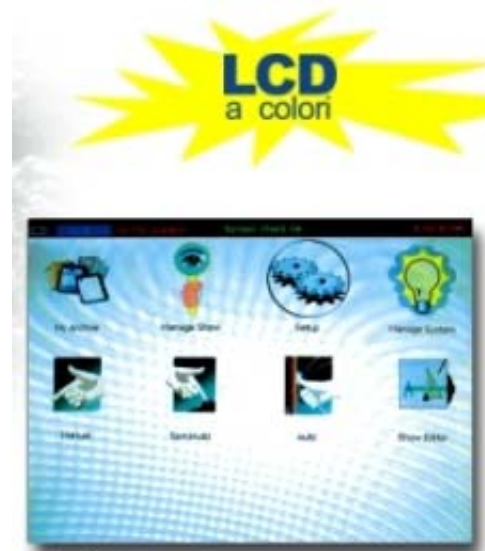


# FIRING SYSTEMS **MONETTI**

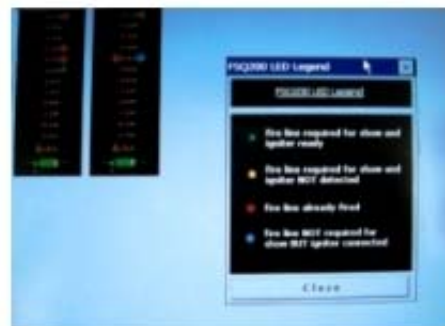
## Pyroleda® Firework Bus Communicator FBC 300

### THE LAST DIGITAL EVOLUTION OF THE PYROLEDA® FIRING SYSTEM

The digital Pyroleda® system FBC 300, with BUS communication, to program and manage complex pyrotechnic and pyromusical displays.



Starting menu



Linee - Check

- Color display LCD
- Selector JOG
- Programming through the LDC display, Pyromotion® or ShowSim®
- Execution mode: MANUAL, SEMI-AUTO, AUTOMATIC, SEQUENTIAL
- Diagnostic of the system
- Stop / suspend the show or only the music
- Audio IN - Audio OUT for pyromusical
- Synchronization of the cues with MP3 and WAV
- Decoder of SMPTE signal
- Internal rechargeable battery 12V
- Internal quartz clock
- Can be powered directly at 12 V or 220V or 110V
- Disciple with 25 address (Sequencer FSQ 200 with DISCIPLE)
- Connection to the disciple with normal wire (type Ø Cu 0,5)
- Communication up to 126 disciple for each FBC 300

## ABOUT PYROLEDA® FBC 300

The FBC 300 digital system provided by Pyroleda® is based on the principles of continuity, modularity and security.

### CONTINUITY

Users of Pyroleda® firing systems know that their device will always be compatible with later, up-dated and more advanced versions. The models Pyroleda® FRC 200 (Firing System) and Pyroleda® FSQ 200 (Sequencer) are compatible with the new digital system and with appropriate adaptations may be combined to create a single, integrated system.

### MODULARITY

Each Sequencer FSQ 200 may be used in Stand-Alone mode (autonomous and independent) and is compatible with any other firing system.

But the Sequencer FSQ 200, with an appropriate software adaptation and the application of a BUS decoder (FBCD 300, known as DISCIPLÉ), can easily be transformed into an intelligent extension of the Pyroleda® FBC 300 digital system.

Fitted with the DISCIPLÉ FBCD 300, the Sequencer FSQ 200 becomes compatible with the FBC 300 command console and can decode information sent from the console by means of BUS communication.

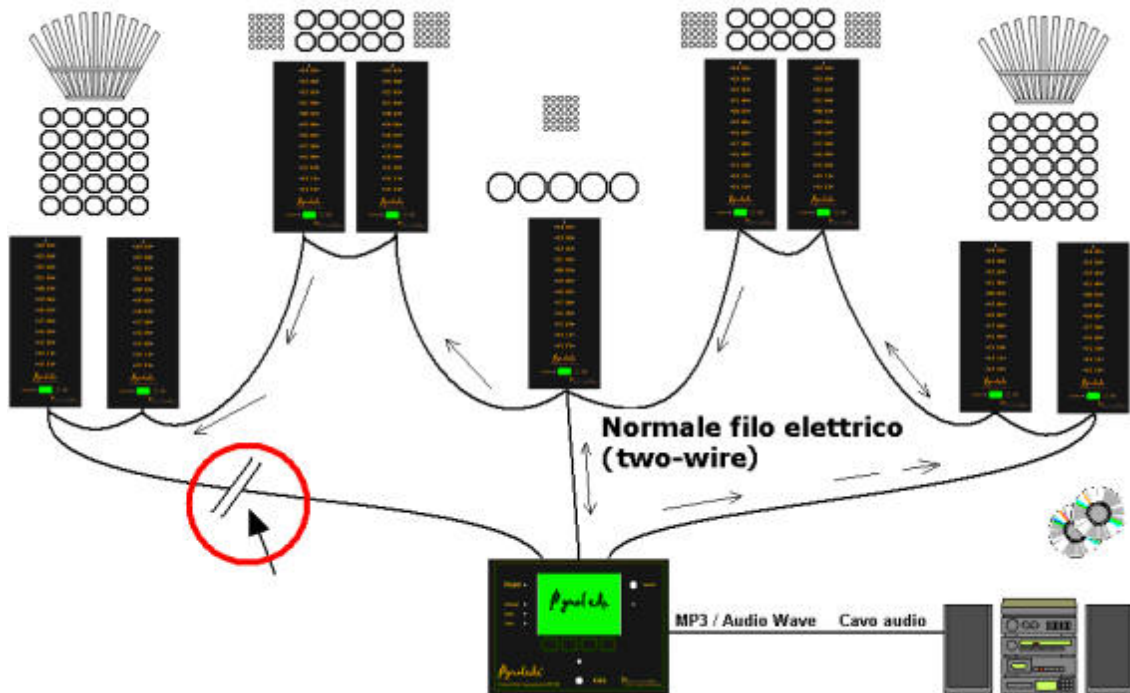
This adaptation does not prevent the Sequencer FSQ 200 from being used in its Stand-Alone function in other situations. So the Sequencer can continue to be used independently with any firing system or integrated in the FBC 300 digital system.

### SECURITY

Pyroleda® FBC 300 uses a BUS communication with a no-standard protocol expressly developed

Connections and communications between the FBC 300 console and the peripheral FSQ 200s (up to 126 Sequencers for each FBC 300) are made by means of normal electric wire or radio/wireless.

Any type of electric wire may be used. This means you don't have to buy special, expensive or bulky wire. Indeed, special wire does not eliminate the risk of unpleasant surprises and interruptions caused by fire on the ground. How many times have we heard of important shows involving sophisticated digital systems interrupted because of a connection burnt by a firework? It is better to consider other methods to guarantee on-going control over the show (eg. REDUNDANCE).



**Connections with REDUNDANCE – Interruption of communication not serious**

The information sent between the FBC 300 console and the peripheral FSQ 200s is bi-directional and allows circuit checks, battery status checks, igniter connection checks, a choice of firing modes and all the commands necessary to manage a show in complete security.

At the time of writing of this manual, Pyroleda® is developing a wireless (radio) system, and we are also working towards compatibility between this system and the Pyroleda® FRC 200. Please contact the supplier for information about these two projects.

### SYSTEM POTENTIAL – CURIOSITIES

The FBC 300 console can command up to 126 Sequencer FSQ 200s. Each FSQ 200 has 25 lines, so each FBC 300 can make up to 3150 ignitions at one time.

It is possible to synchronize up to 255 FBC 300 consoles (using GPS, SATELLITE, NETWORKS, WIRELESS OR WIRES). In this way the maximum capability is increased to 803,250 ignitions.

Each line of the FSQ 200 fires at 24 volts, so each line may fire up to about 10 igniters in series (depending on the igniters).

All lines can be fired simultaneously. So with this system you can fire up to 8,032,500 igniters all at the same time!

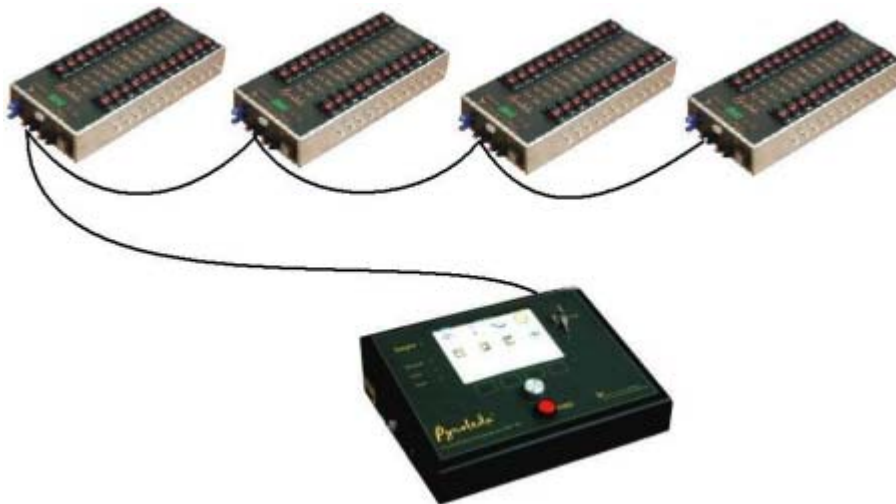
### COMPATIBILITY WITH PYROMUSICAL SOFTWARE



Good firing system hardware requires good supporting software that gives free reign to the pyrotechnician's imagination in the creation of pyromusical shows. Pyroleda® is now supported by Pyromotion and ShowSim that gives pyrotechnicians a unique tool based on high levels of professionalism, technology and safety.

### SETUP OF PYROLEDA® FBC 300 ON THE FIELD

In this phase the Pyroleda® FBC 300 digital system uses Sequencer FSQ 200s as intelligent extensions.

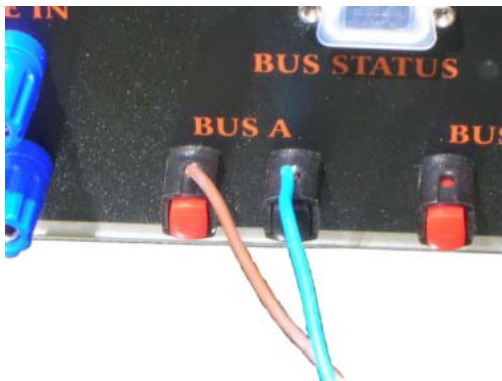


**Pyroleda® FBC 300 can control up to 126 Sequencer FSQ 200**

Start by giving an ID= (address) to each Sequencer FSQ 200 (from 1 to 126 Sequencer FSQ 200s)

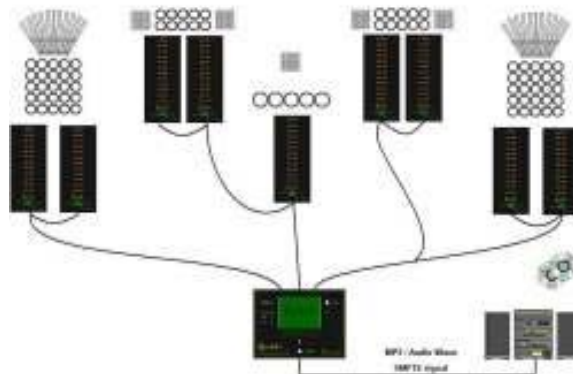


With Pyroleda® FBC 300 connections are easy to make using **Cu 0.5 mm  $\varnothing$  wire** or any other type of conducting wire. No special cables or connectors are required.



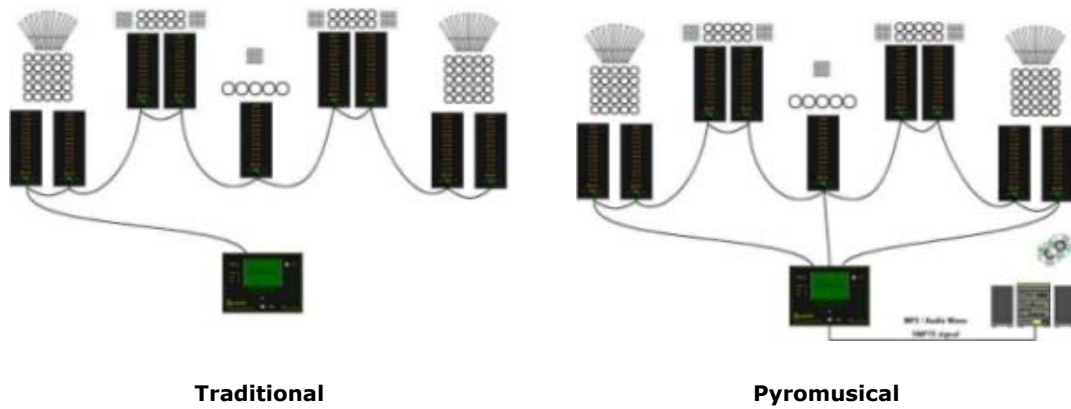
**Electric lamp corde (eg. Multiwire Cu multifilo 0,7 mm  $\varnothing$ ) or phone wire (eg. 0,5 mm  $\varnothing$ )**

Connections can be done based on the needs of the site: ring, star o mixed.



**Maximum flexibility of connection**

The FBC 300 system allows you to perform traditional or pyromusical shows. To accompany your show with MP3 or WAV music tracks, all you have to do is connect your console to a sound system (by means of RCA audio cable).



Pyroleda® FBC 300 is complete and easy to use thanks to its large colour LCD. From the start menu you can access and visualise all operations



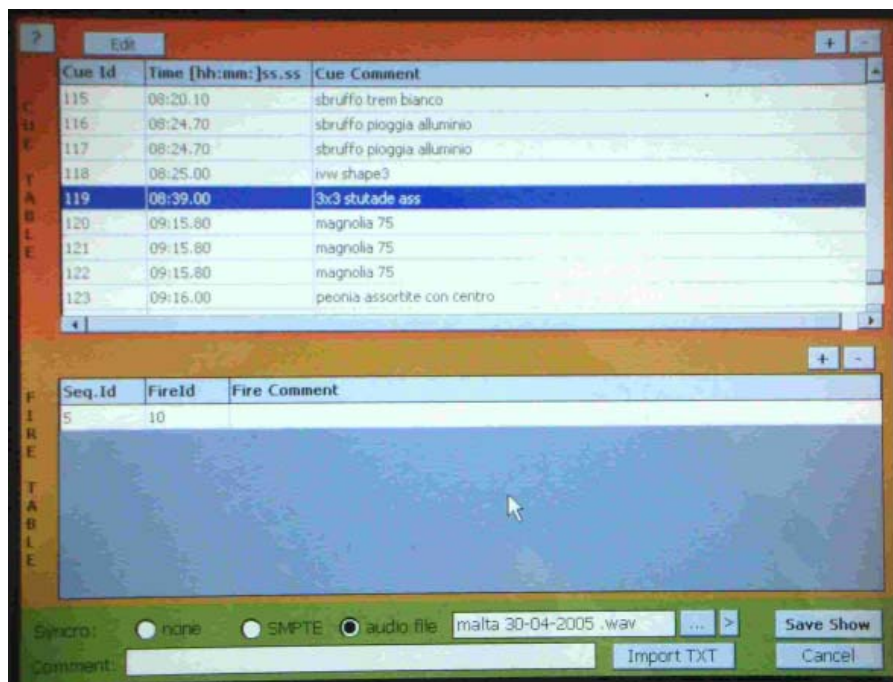
**Start menu**

4 USB plug-in connectors allow you to use mouse, keyboard and USB pen as external memory. That's will help you for the programming. You will not need those accessories during the show except for the USB pen.



**Console with accessories**

Programme cues, addresses and fire times using **show editor**. Associate an audio file (MP3 o WAV) to programme a pyromusical show.



**Show Editor**

Pyroleda® FBC 300 is compatible with special softwares  
 Create a musical show with



and download it directly onto your console FBC 300.

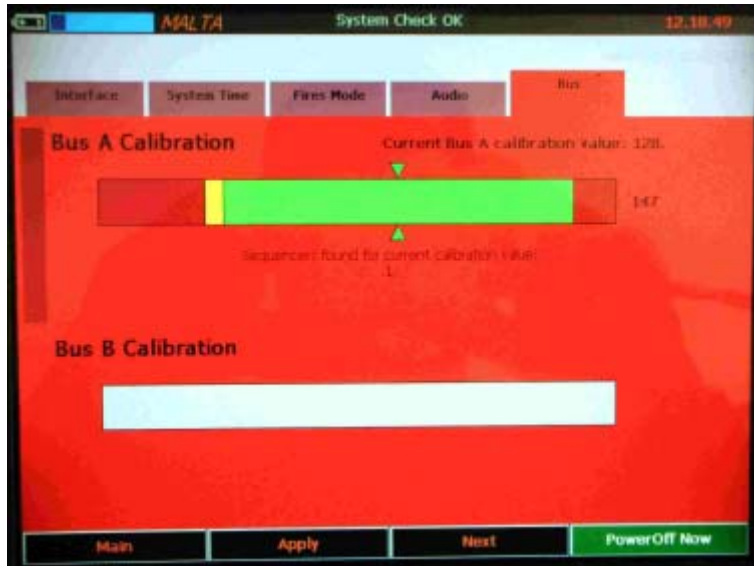
Check your show and transfer your programme to the modules (Sequencer FSQ 200)



**Manage System**

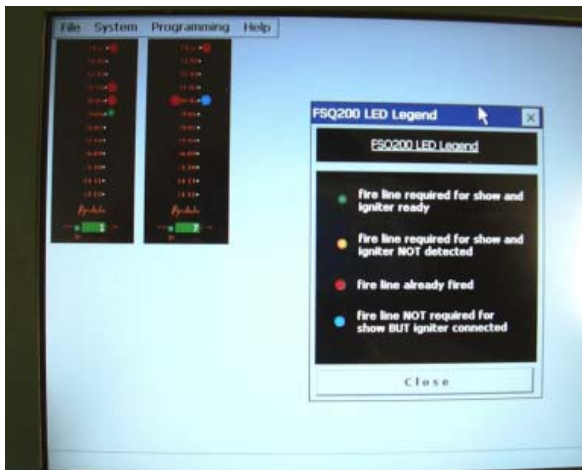
Your Sequencer FSQ 200s can function autonomously using their own power and memory.

Use the multi-function set-up menu to check communications between your Pyroleda® FBC 300 and Sequencer FSQ 200s.



### Setup Menu

Check the igniter connections before a show.  
Each LED colour has a different meaning.



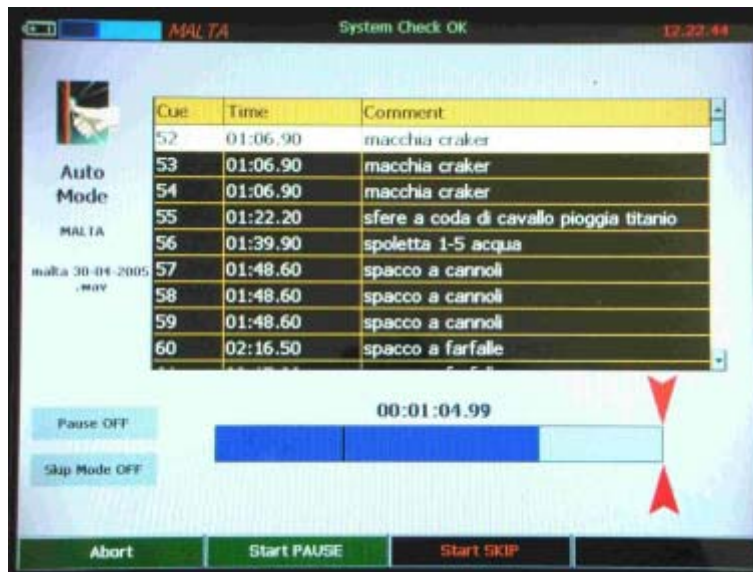
### Manage Show



### Diagnostic of the system

Firing your show in **automatic** mode is just one of several performance options.  
Music and fireworks start at the same instant with just one press of the **FIRE** button.





### Auto Mode

Continue to explore the Pyroleda® FBC 300 and all its useful functions